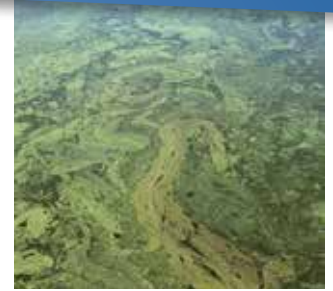




The Algae Treatment Experts

# PRODUCT: AQUATIC BARLEY STRAW EXTRACT

TARGET: PONDS & DAMS



*The safe & natural treatment in fish ponds, ponds & dams.*

## AQUATIC BARLEY STRAW EXTRACT

- Quick acting
- Australian Made & Owned
- Natural and Eco-friendly
- Easy pour into water
- Harmless to pets, plants & people

### SUITABLE FOR

Small Ponds, Fish Ponds & Large Ponds.



Fish Pond

0 - 15,000L  
0 - 20m<sup>2</sup>



Small Pond



Large Pond

15,000L - 50,000L  
0 - 50m<sup>2</sup>



Small Dam

50,000L - 1ML  
50m<sup>2</sup> - 2,000m<sup>2</sup>

## How Does Barley Straw Work?

Aquatic Barley Straw Extract is a super-concentrated liquid made from whole barley straw designed for easy-to-use application. This is a no mess application product.

This powerful formula is the natural solution for maintaining healthy, clear and clean pond

water all year round. Aquatic Barley Straw Extract instantly gives results letting you enjoy the benefits of natural barley straw. No need to wait when you are using Aquatic Barley Straw Extract, it will naturally improve water purity. Perfectly safe to use around fish, plants and people.



*All the benefits of barley straw without the mess!*

## SAFE FOR

Fish, Aquatic Plants, Pets, Wildlife, The Environment & is a Natural product.



## BUY ONLINE

500mL

1L

5L

20L



**AQUATIC TECHNOLOGIES**  
*The Water Treatment Experts*

Re-Order Online:

[WWW.AQUATICTECHNOLOGIES.COM.AU](http://WWW.AQUATICTECHNOLOGIES.COM.AU)

# HOW TO USE: AQUATIC BARLEY STRAW EXTRACT



## APPLICATION RATES:



*The Algae Treatment Experts*

### Aquatic Barley Straw Extract

#### Enclosed Water Tanks-

0 - 20,000L  
0 - 20m<sup>2</sup>



<b>RECOMMENDED QUANTITY</b>	We recommend purchasing between 500mL-1L.
<b>APPLICATION RATE</b>	10mL of product for every 100L of water.
<b>HOW MUCH TO APPLY</b>	Gently shake container to mix. Measure the required amount of product & pour directly into the water.
<b>HOW OFTEN TO APPLY</b>	Apply twice in the first week then weekly thereafter.

#### Small Outdoor Ponds, Fountains or Water Features-

0 - 15,000L  
0 - 20m<sup>2</sup>



Fish Ponds



Small Ponds

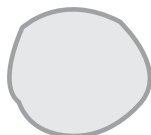
<b>RECOMMENDED QUANTITY</b>	We recommend purchasing between 1L-5 Litres.
<b>APPLICATION RATE</b>	15mL of product for every 100L of water.
<b>HOW MUCH TO APPLY</b>	Gently shake container to mix. Measure the required amount of product & pour directly into the water.
<b>HOW OFTEN TO APPLY</b>	Apply twice in the first week then weekly thereafter.

#### Large Ponds and Dams-

15,000L-50,000L  
0 - 50m<sup>2</sup>



Large Ponds



Small Dams

<b>RECOMMENDED QUANTITY</b>	We recommend purchasing between 5L-20 Litres.
<b>APPLICATION RATE</b>	Large Ponds: 30mL of product for every 2000L of water. Large Dams: 10L of product for every 1ML of water.
<b>HOW MUCH TO APPLY</b>	Gently shake container to mix. Measure required amount & pour directly into the water.
<b>HOW OFTEN TO APPLY</b>	Apply twice in the first week then, monthly thereafter.

*\*Always read the product label for directions.*

#### For Best Results:

For water with high turbidity, or poor water clarity, apply an additional 20% more product until clarity improves.



Head Office: 41 Yazaki Way, Carrum Downs, Vic. Australia 3201

Order Online: [www.AQUATICTECHNOLOGIES.com.au](http://www.AQUATICTECHNOLOGIES.com.au)